



# Enhancements

## SYSPRO 7 Update 1 | Port 026

Build date: July 2017

Produced by: SYSPRO Technical Authoring



## SYSPRO Technical Authoring

Copyright © 2017 Syspro Ltd

All rights reserved

No part of this document may be copied, photocopied, or reproduced in any form or by any means without permission in writing from Syspro Ltd. SYSPRO is a trademark of Syspro Ltd. All other trademarks, service marks, products or services are trademarks or registered trademarks of their respective holders.

Syspro Ltd reserves the right to alter the contents of this document without prior notice. While every effort is made to ensure that the contents of this document are correct, no liability whatsoever will be accepted for any errors or omissions.

This document is a copyright work and is protected by local copyright, civil and criminal law and international treaty. This document further contains secret, confidential and proprietary information belonging to Syspro Ltd. It is disclosed solely for the purposes of it being used in the context of the licensed use of the Syspro Ltd computer software products to which it relates. Such copyright works and information may not be published, disseminated, broadcast, copied or used for any other purpose. This document and all portions thereof included, but without limitation, copyright, trade secret and other intellectual property rights subsisting therein and relating thereto, are and shall at all times remain the sole property of Syspro Ltd.

---

# Table of Contents

- Port 026..... 4**
  - Balance function separated from Period end (cont.)..... 4
  - New user interface for Interface Export..... 4
  - GL Integration programs include range/list options..... 5
  - Improved print selections for journals and registers..... 5
  - Retain original AR and AP exchange rate (cont.)..... 6
  - Objects optimized for SQL..... 6
  - New object to query current processes..... 7
  - New object to query MRP calculation..... 7
  - New object to query SQL locks..... 8
  - New object to query stock turn ratio..... 8
  - New object to query logged-in users..... 8
  - Additional updates..... 9
  
- Appendix..... 10**
  - Additional resources..... 10

---

## Port 026

---

The following is a summary of the enhancements that have been implemented for this port.

### Balance function separated from Period end (cont.)

---

Version	Issue	Port
7.0	001_SP1	026

#### What was done?

This is a continuation of the enhancement released in Port 023 to speed up **Period end** processing by allowing you to optionally choose whether to run a **Balance** function for month end and year end routines.

The **Balance** function of the Work in Progress module has been created as a separate business object and is not run automatically when performing a month or year end.

There is a new **Include balance function** option that you can optionally select when you run a function that includes a month end or year end.

A **Last date balance was run** field has also been added to the **Control details** section of the programs. A warning is displayed if you run a month end or year end routine and a balance function has not yet been run for the date reflected in this field.

#### Where can I see the change?

Program	Description	Version
IMPTRQ	<b>Inventory Reallocate Qty on Order</b>	000
WIPP01	<b>WIP Period End</b>	059
WIPT01	<b>WIP Balance Function</b>	000

### New user interface for Interface Export

---

Version	Issue	Port
7.0	001_SP1	026

#### What was done?

The user interface has been updated to include an entry form and three listviews to display the **Log of new imported files**, **Log of processed files** and **Validating/Importing phase** for the current site.

The listviews are populated after a site has been selected in the entry form and validated and pressing any of the buttons provided on the toolbar.

#### Where can I see the change?

Program	Description	Version
INTP30	<b>Interface Import</b>	027

## GL Integration programs include range/list options

Version	Issue	Port
7.0	001_SP1	026

### What was done?

You can now indicate a range or list of sub module transaction journals for which you want to create (or create and post) the ledger journal.

### Where can I see the change?

Program	Description	Version
APSPGI	<b>AP Invoice GL Integration</b>	024
APSPGP	<b>AP Payment GL Integration</b>	023
APSTGI	<b>AP Invoice GL Integration</b>	015
APSTGP	<b>AP Payment GL Integration</b>	013
ARSPGI	<b>AR Invoice GL Integration</b>	041
ARSPGP	<b>AR Payments GL Integration</b>	028
ARSTGI	<b>AR Invoice GL Integration</b>	037
ARSTGP	<b>AR Payment Integration update</b>	017
ASSPGI	<b>Asset GL Integration</b>	016
ASSTGI	<b>Asset GL Integration</b>	008
INVPGG	<b>GRN GL Integration</b>	020
INVPGM	<b>Inventory GL Integration</b>	036
INVTGG	<b>Inventory GRN GL Integration Update</b>	011
INVTGM	<b>Inventory Integration Update</b>	024
TPMPGI	<b>TPM GL Integration</b>	015
TPMTGI	<b>TPM GL Integration</b>	009
WIPPGI	<b>WIP Labor GL Integration</b>	023
WIPPGM	<b>WIP Part Billings GL Integration</b>	017
WIPTGI	<b>WIP Labor GL Integration</b>	015

## Improved print selections for journals and registers

Version	Issue	Port
7.0	001_SP1	026

### What was done?

A new report selection option has been added to the SRS forms that enables you to print all unprinted journals/registers, to reprint journals/registers or a combination of both.

## Where can I see the change?

Program	Description	Version
APSQ11	<b>AP Journal Query</b>	021
ARSQ15	<b>AR Invoice Register</b>	012
ARSQ21	<b>AR Cash Journal Query</b>	020
IMPQ11	<b>Inventory Journal Report</b>	021
PORQ84	<b>GRN Journal Report</b>	008

File	Version
AP_JOURNAL_REPORT	009
AR_CASH_JOURNAL_REPORT	006
AR_INVOICE_REGISTER	006
AR_INVOICE_REGISTER_OPT	002
GRN_JOURNAL_REPORT	003
INVENTORY_JOURNAL	011

## Retain original AR and AP exchange rate (cont.)

Version	Issue	Port
7.0	001_SP1	026

### What was done?

This is a continuation of the enhancement released in Port 023 to store the original exchange rate used when processing AR and AP invoices. An original exchange rate was added to the AR and AP invoice tables which are not overwritten during the revaluation process.

## Where can I see the change?

Program	Description	Version
INTP30	<b>Interface Import</b>	027

## Objects optimized for SQL

Version	Issue	Port
7.0	001_SP1	026

### What was done?

Business objects have been changed to use SQL-optimized code to retrieve data from a SQL company. This will improve the performance of the business objects when using a SQL database.

## Where can I see the change?

Schemas and sample XML instances are available in the SYSPRO e.net solutions Business Objects Reference Library.

Program	Description	Version
EFTQSL	<b>EFT Payments Selected for Extract</b>	004
EFTQCB	<b>EFT CB Pending Transactions Report</b>	005
ARSQMA	<b>List of Multiple Ship to Addresses</b>	005
APSQ35	<b>AP Released Payments Query</b>	008

## New object to query current processes

Version	Issue	Port
7.0	001_SP1	026

### What was done?

A new business object was created to enable e.net Solutions developers to develop applications to query information about the current processes (i.e. all processes, SYSPRO processes or unknown processes).

## Where can I see the change?

Schemas and sample XML instances are available in the SYSPRO e.net solutions Business Objects Reference Library.

Program	Description	Version
COMQPR	<b>Processes Query</b>	000

## New object to query MRP calculation

Version	Issue	Port
7.0	001_SP1	026

### What was done?

A new business object was created to enable e.net Solutions developers to develop applications to query sales orders, purchase orders and requisitions that have been included or excluded from the MRP calculation.

## Where can I see the change?

Schemas and sample XML instances are available in the SYSPRO e.net solutions Business Objects Reference Library.

Program	Description	Version
MRPQEX	<b>MRP Excluded Items</b>	000

## New object to query SQL locks

Version	Issue	Port
7.0	001_SP1	026

### What was done?

A new business object was created to enable e.net Solutions developers to develop applications to query information about the occurrence of SQL locks.

### Where can I see the change?

Schemas and sample XML instances are available in the SYSPRO e.net solutions Business Objects Reference Library.

Program	Description	Version
COMQLK	<b>SQL Blocking Details Query</b>	000

## New object to query stock turn ratio

Version	Issue	Port
7.0	001_SP1	026

### What was done?

A new business object was created to enable e.net Solutions developers to develop applications to query the total usage and stock turn ratio for a single, or range of stock codes.

### Where can I see the change?

Schemas and sample XML instances are available in the SYSPRO e.net solutions Business Objects Reference Library.

Program	Description	Version
INVPEN	<b>Inventory Query</b>	138
INVQTR	<b>Inventory Stock Turn Ratio Query</b>	000

## New object to query logged-in users

Version	Issue	Port
7.0	001_SP1	026

### What was done?

A new business object was created to enable e.net Solutions developers to develop applications to query information about the users logged into SYSPRO, as well as the files being used.



## Where can I see the change?

Schemas and sample XML instances are available in the SYSPRO e.net solutions Business Objects Reference Library.

Program	Description	Version
COMQUS	<b>Display Users Logged in Query</b>	000

## Additional updates

---

The following additional updates were made to the software.

### Architecture to generate a document on a mobile device



This functionality is scheduled for a future release and is not currently available.

This port includes some of the architecture that will enable you to generate a document from an application on a mobile device (like Espresso) in the same format as that produced from within the core SYSPRO product.

Program	Description	Version
COMQDP	<b>COM Retrieve SRS Control file data</b>	000
IMP041	<b>Document Print</b>	207
SRSPRN	<b>SRS Documents printing program</b>	000

# Appendix

---

## Additional resources

---

### Reference Guides

SYSPRO's Reference Guides are primarily module-based and cover aspects of the user interface at program level. This includes detailed field and function explanations as well as notes and warnings regarding the usage of an application program within SYSPRO. These guides also extend to feature topics within the system (e.g. Tax, Security, Language Translation, etc.) and include implementation considerations. Please refer to the SYSPRO [InfoZone](#) for details on how to obtain these guides (<http://infozone.syspro.com/support>).

### Support

SYSPRO's [InfoZone](#) provides up-to-date information about the product as well as more advanced tutorials for registered users.

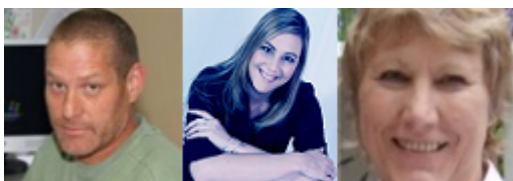
### Newsletter

As part of SYSPRO's ongoing commitment to keeping you informed about the latest product developments, a regular newsletter is distributed to the SYSPRO community. The newsletter covers many aspects of SYSPRO ranging from product enhancements to support-related information, known issues and useful tips. You can subscribe to this newsletter from the SYSPRO [InfoZone](#).

### Forums

SYSPRO provides a number of active on-line [forums](#) for you to engage in various discussions about the product.

### Contact us



The Technical Authoring team comprises: Even Nettet, Carol Hart and Monique MacNaught. Send us your comments to help us improve the standard of our reference guides.



Emails can be sent to [Development-Authors@za.syspro.com](mailto:Development-Authors@za.syspro.com).